



Gretna  
Gateway  
Outlet Village

PHASE 3 PREVIEW



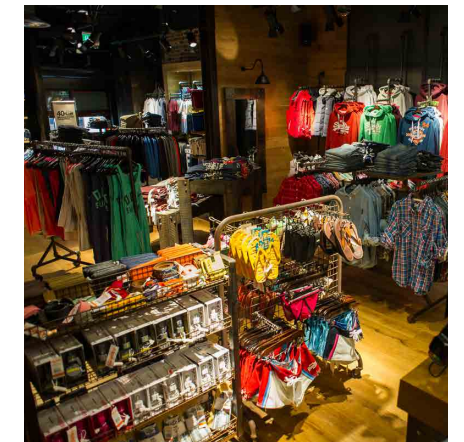
We are delighted to witness premium brands making significant investment into their Gretna Gateway Outlet Village stores. Both Polo Ralph Lauren and Superdry have recently unveiled stunning shop fit-outs here, which now represent the standard other new and existing tenants should aspire to, and which can only help to improve overall performance levels for individual tenants and for the centre as a whole.

## *Announcing Our Expansion*

Gretna Gateway Outlet Village is a major UK retail destination with sales and footfall performance that strongly outperform industry averages. A prime Outlet location, situated on the Scotland/England border and directly adjacent to the M6 (J45) M74 (J22) corridor plus the A75; our enviable tenant mix includes Polo Ralph Lauren, Nike, Molton Brown, Gap Outlet, M&S Outlet, Superdry and many, many more.

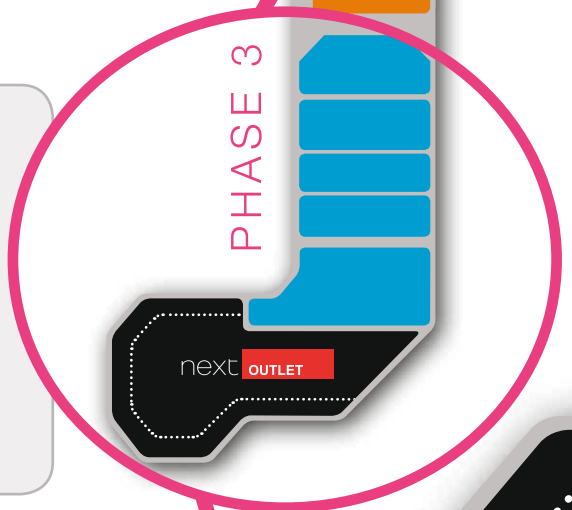
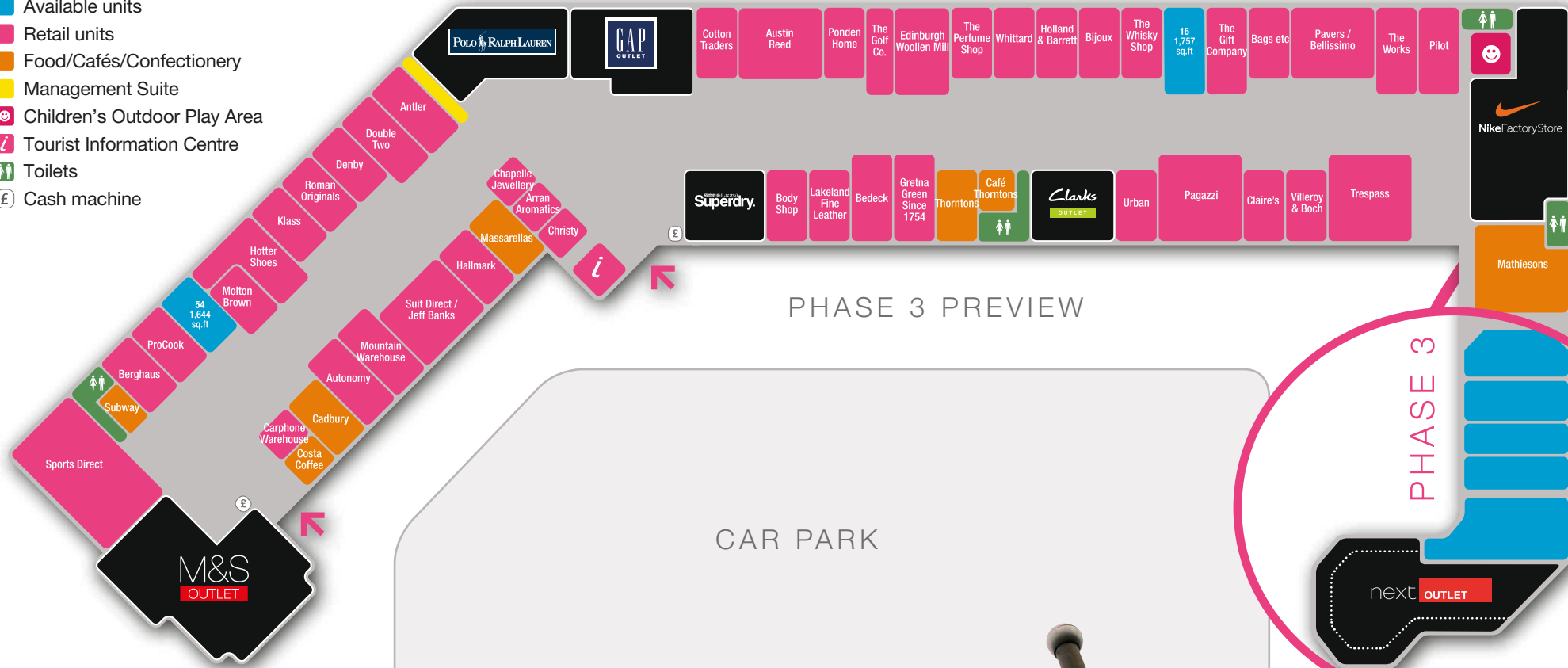
We are delighted to unveil the next phase in our development with the commencement of our phase 3 extension. Anchored by a Next Outlet store totalling over 11,000 sq. ft. there is an additional approximate 8,000 sq. ft. available for tailoring to individual brand requirements.

We look forward to discussing this superb opportunity with you.





- Available units
- Retail units
- Food/Cafés/Confectionery
- Management Suite
- Children's Outdoor Play Area
- Tourist Information Centre
- Toilets
- Cash machine



# PHASE 3

- UNIT 60**  
Gross Internal Floor Area: 1,507 SQFT
- UNIT 61**  
Gross Internal Floor Area: 1,560 SQFT
- UNIT 62**  
Gross Internal Floor Area: 1,028 SQFT
- UNIT 63**  
Gross Internal Floor Area: 1,028 SQFT
- UNIT 64**  
Gross Internal Floor Area: 2,841 SQFT



# Gretna Gateway

Outlet Village

Glasgow Road, Gretna, DG16 5GG  
Tel 01461 339028  
gretnagateway.com



For further information on leasing opportunities please contact our agent

**CHD PROPERTY**

CHARTERED SURVEYORS

**020 7734 2080**

[londonoffice@chdproperty.com](mailto:londonoffice@chdproperty.com)

CHD Contact: Charles Dring